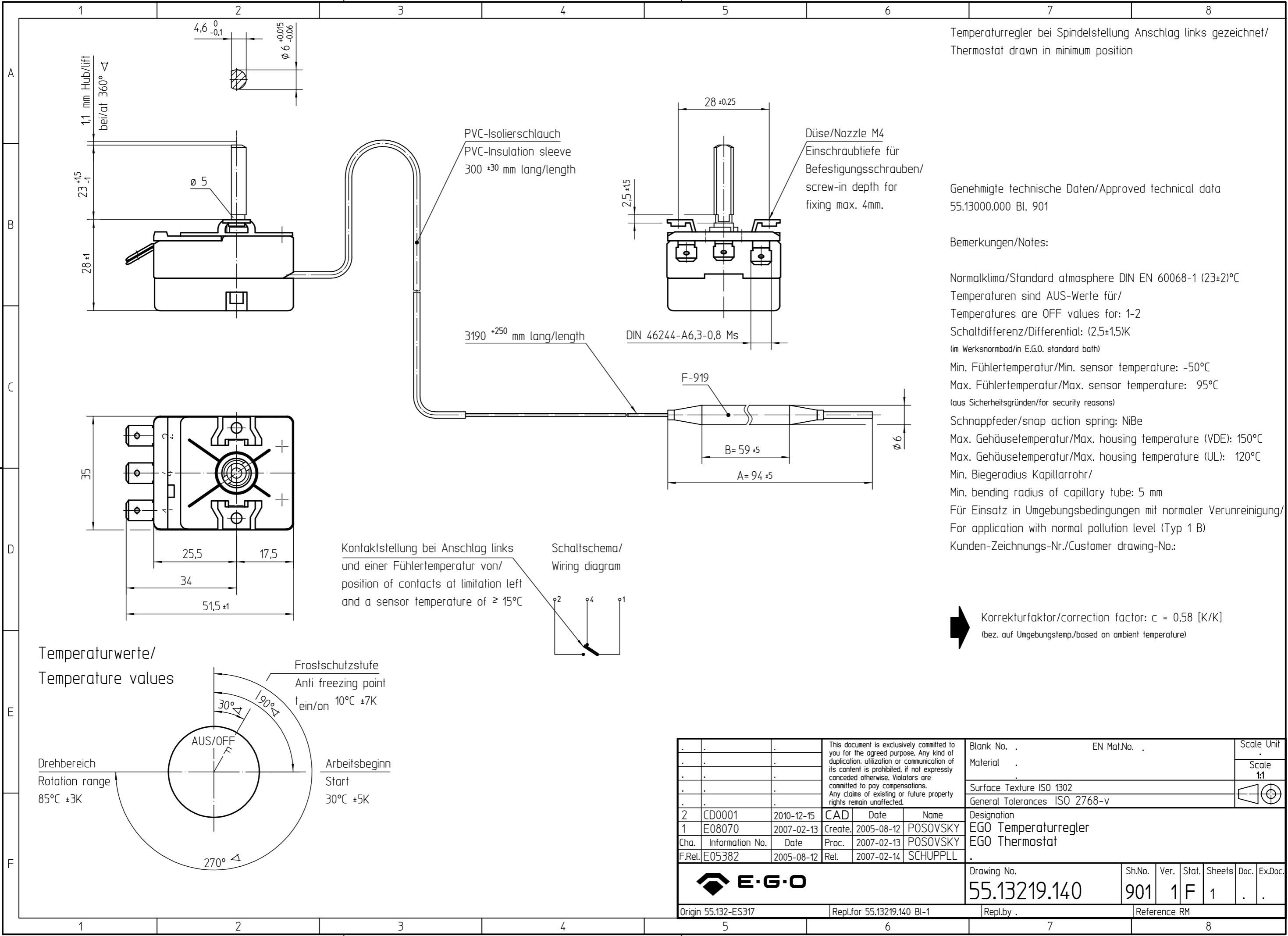


document id.: 55.13219.140-001-01-A / state: 230 - released
 view date: 2024-04-04 10:49:14 / user: BENDER
 item id.: 55.13219.140-00/69A / SAP material state: 2F



Temperaturregler bei Spindelstellung Anschlag links gezeichnet/
 Thermostat drawn in minimum position

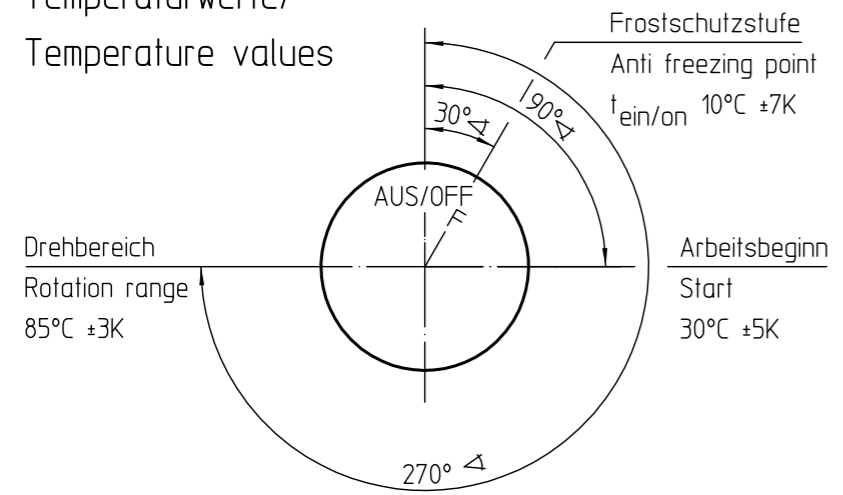
Genehmigte technische Daten/Approved technical data
 55.13000.000 Bl. 901

Bemerkungen/Notes:

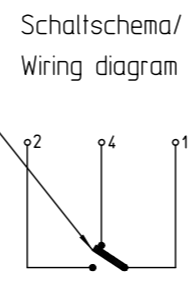
Normalklima/Standard atmosphere DIN EN 60068-1 (23±2)°C
 Temperaturen sind AUS-Werte für/
 Temperatures are OFF values for: 1-2
 Schaltdifferenz/Differential: (2,5±1,5)K
 (im Werksnormbad/in E.G.O. standard bath)
 Min. Fühlertemperatur/Min. sensor temperature: -50°C
 Max. Fühlertemperatur/Max. sensor temperature: 95°C
 (aus Sicherheitsgründen/for security reasons)
 Schnappfeder/snap action spring: NiBe
 Max. Gehäusetemperatur/Max. housing temperature (VDE): 150°C
 Max. Gehäusetemperatur/Max. housing temperature (UL): 120°C
 Min. Biegeradius Kapillarrohr/
 Min. bending radius of capillary tube: 5 mm
 Für Einsatz in Umgebungsbedingungen mit normaler Verunreinigung/
 For application with normal pollution level (Typ 1 B)
 Kunden-Zeichnungs-Nr./Customer drawing-No.:

➔ Korrekturfaktor/correction factor: $c = 0,58 [K/K]$
 (bez. auf Umgebungstemp./based on ambient temperature)

Temperaturwerte/
 Temperature values



Kontaktstellung bei Anschlag links
 und einer Fühlertemperatur von/
 position of contacts at limitation left
 and a sensor temperature of $\geq 15^\circ\text{C}$



This document is exclusively committed to you for the agreed purpose. Any kind of duplication, utilization or communication of its content is prohibited, if not expressly conceded otherwise. Violators are committed to pay compensations. Any claims of existing or future property rights remain unaffected.					Blank No. .	EN Mat.No. .	Scale Unit .				
					Material .		Scale 1:1				
					Surface Texture ISO 1302						
					General Tolerances ISO 2768-v						
2	CD0001	2010-12-15	CAD	Date	Name	Designation					
1	E08070	2007-02-13	Create.	2005-08-12	POSOVSKY	EGO Temperaturregler					
Cha.	Information No.	Date	Proc.	2007-02-13	POSOVSKY	EGO Thermostat					
F.Rel.	E05382	2005-08-12	Rel.	2007-02-14	SCHUPPLL						
					Drawing No.	Sh.No.	Ver.	Stat.	Sheets	Doc.	Ex.Doc.
					55.13219.140	901	1	F	1	.	.
Origin 55.132-ES317					Repl.for 55.13219.140 Bl-1		Repl.by .		Reference RM		