

MI_2214 MI_2214: Pump cleaning UP30 – conversion tabletop units & floor units



SCC with cleaning

 60 min



Standard



18/06/2025

Topic

The instructions describe the modification of the cleaning pump UP30 on tabletop units & floor units.

Affected product/accessories

SelfCookingCenter Electric and Gas:

- 6-1/1
- 6-2/1
- 10-1/1
- 10-2/1
- 20-1/1
- 20-2/1

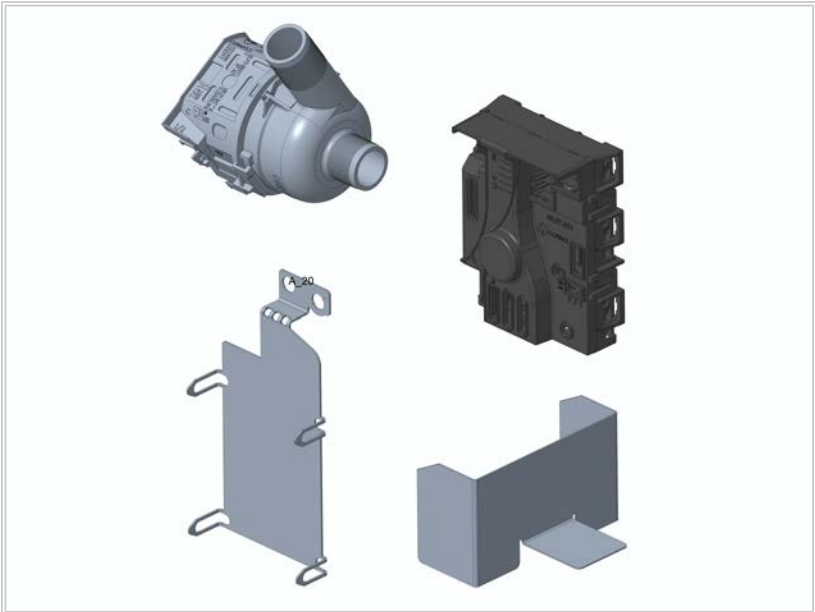
Required tool

- Standard

Required components

The article no.: 87.01.953S contains the following components:

Component	Article number
Cleaning pump 61-202	56.01.947
Control board with housing	40.07.630
Cable: Circulation pump f. KD* 61-202	40.07.754
Cable: Earthing tap	40.07.975
Spacer circulation pump SG*KD*	56.02.048
Bracket electronics circulation pump SG*KD*	56.01.853
Connection terminal WAGO 221*5pin*4mm ²	40.07.972
Hex combination nut M8 St/Zn W0379	10.00.607



General information

NOTICE

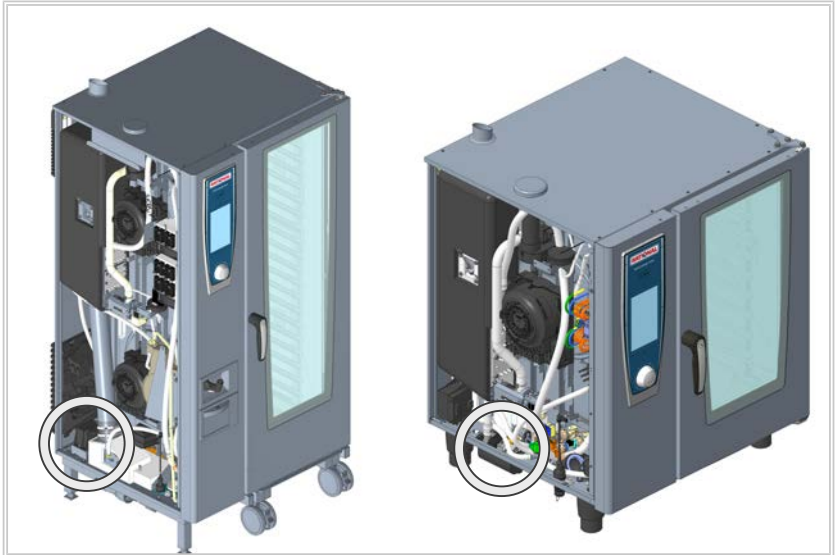
Enter the installation of the component on the service level ("Component replacement" tab). This is an integral part of the maintenance history.

Target group

- This document is intended for skilled technicians, who have been certified by the manufacturer after attending training and safety instructions.
- Installation, inspection, maintenance, and repair work must only be carried out by trained technicians.
- It is recommended that only technicians authorised by the manufacturer perform inspection, maintenance and repair work.

- The unit may not be used, cleaned, or maintained by children. The unit may not be used for play. This is prohibited even under supervision.
- The unit may not be used, cleaned, or maintained by people with limited physical, sensory, or mental capacity or those without the necessary experience or knowledge, unless such people are supervised by a person who is responsible for their safety and who has been informed of the hazards of the unit.
- In order to prevent accidents or damage, the manufacturer recommends that technicians attend training and safety instructions.

Installation position



Safety instructions

DANGER

High voltages when connecting to the mains power

Danger to life due to high voltage.

- Disconnect from the power supply.
- Secure against unintentional switching on.
- Make sure the cooking system is disconnected from the power.

CAUTION

Sharp edges on the housing

Risk of cuts on the housing when working in the unit.

Wear protective gloves.

 **CAUTION**

Risk of crushing when positioning the unit

Fingers, hands and feet could be crushed beneath the unit.

- Wear appropriate protective clothing when positioning the unit.
- Only lift the unit at the intended lifting points.

Revision Log

Changes from previous version of this manual:

- Graphs and tables have been added for:
SW1
CombiMaster and SelfCookingCenter
CombiMaster Plus & SCC

MI_2214 Pump cleaning UP30 – modification tabletop unit



SCC with cleaning



60 min



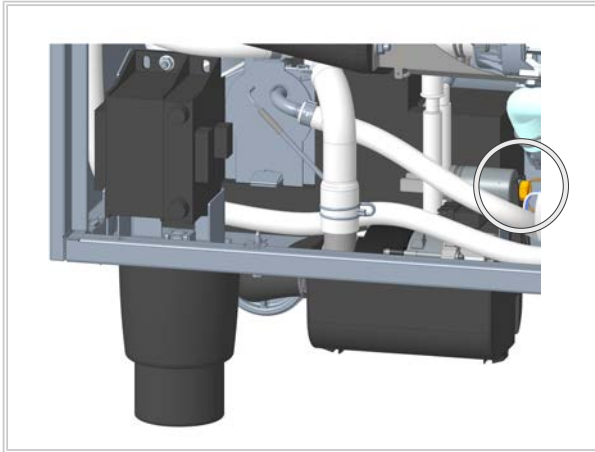
Standard



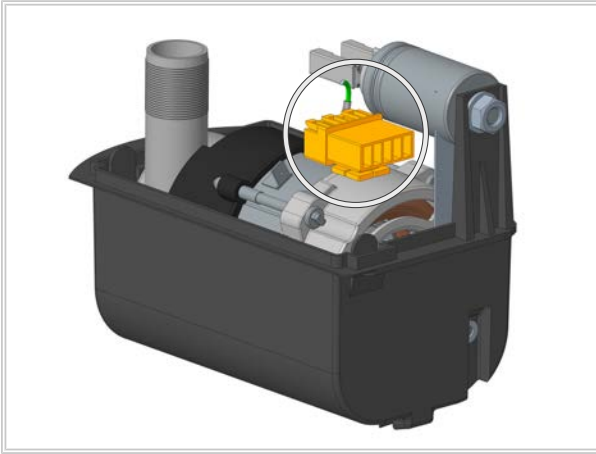
18/06/2025

Work steps – Modification of the pump cleaning UP30 – Tabletop unit

- ✓ The unit is switched off and voltage-free.
- ✓ The electrical compartment is open.
- 1. Loosen the nut on the capacitor.



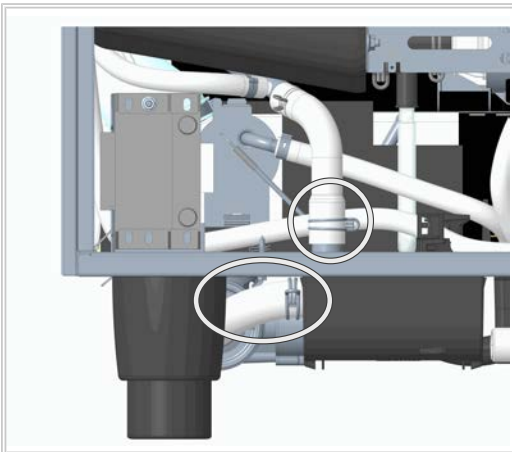
2. Disconnect the pump from the cable trunk.



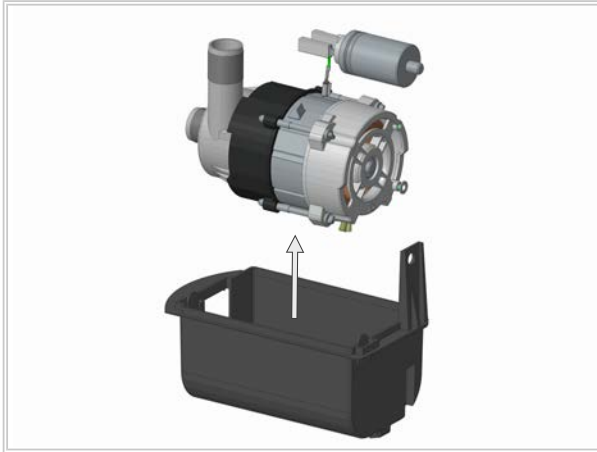
3. Loosen the hose clamps so that the pressure hose and the suction hose can be removed.

NOTICE

During this work step, water may escape from the dismantled hoses.



4. Remove the pump from the pump housing.



> The removal of the old pump is complete.

Installing the new pump

1. Connect the cable to the pump.

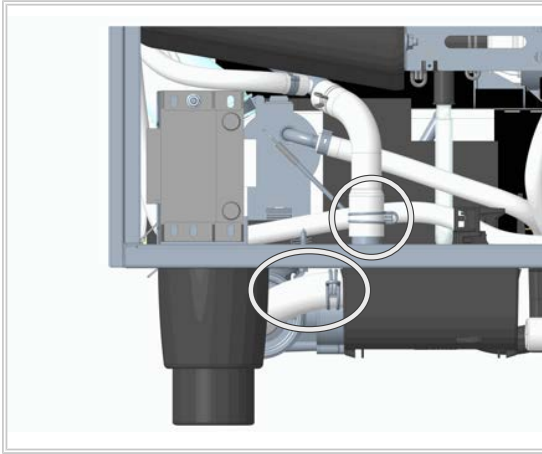
NOTICE

All cables are poka yoke.

2. Insert the new pump into the housing.



3. Connect the suction and pressure hoses.



4. Connect all three cables to the control board.
- (1) Power supply control board
 - (2) Connection plug from the cable trunk (if there is no plug, please note L1, N and PE)
 - (3) Pump and control board connection
 - (4) Note the switching positions as shown in the table.

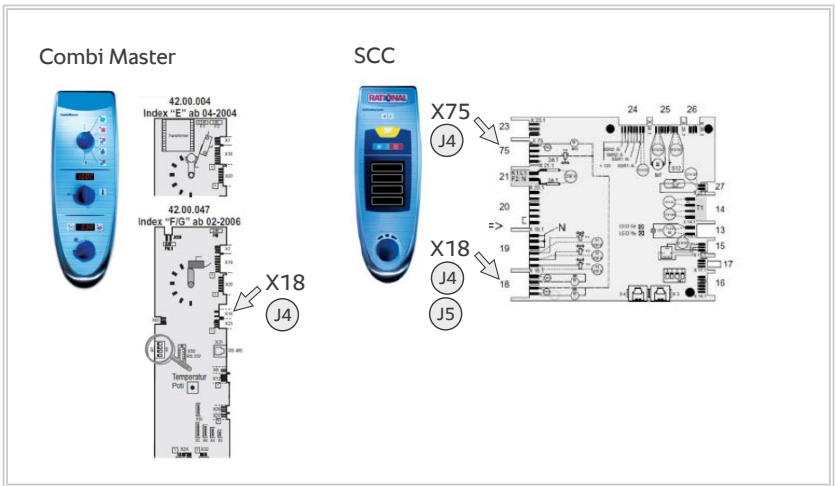
NOTICE

All cables are poka yoke.

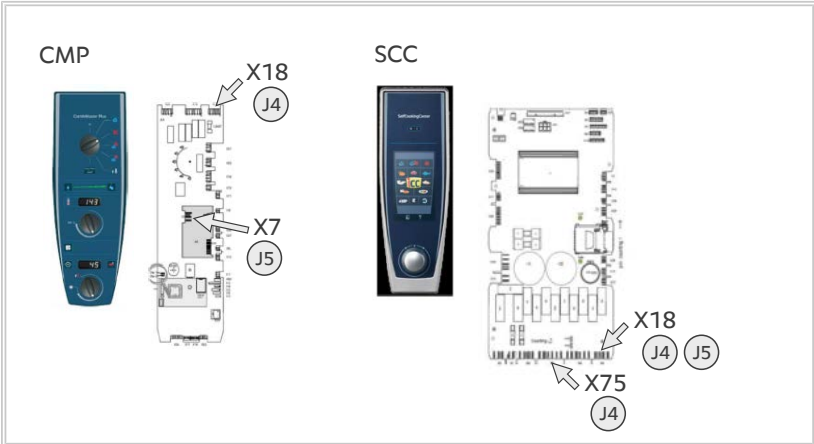
SW1

Pump type	DIP setting for unit types 61, 62, 101, 102, XS* (not pump only)			DIP setting for unit types 201, 202		
CleanJet pump M6	OFF	<input type="checkbox"/>	<input type="checkbox"/>	OFF	<input type="checkbox"/>	<input type="checkbox"/>
	ON	<input type="checkbox"/> 3	<input type="checkbox"/> 2 1	ON	<input type="checkbox"/> 3	<input type="checkbox"/> 2 1
SC pump M4	OFF	<input type="checkbox"/>	<input type="checkbox"/>	OFF	<input type="checkbox"/>	<input type="checkbox"/>
	ON	<input type="checkbox"/> 3	<input type="checkbox"/> 2 1	ON	<input type="checkbox"/> 3	<input type="checkbox"/> 2 1
Care Pump M12	OFF	<input type="checkbox"/>	<input type="checkbox"/>	OFF	<input type="checkbox"/>	<input type="checkbox"/>
	ON	<input type="checkbox"/> 3	<input type="checkbox"/> 2 1	ON	<input type="checkbox"/> 3	<input type="checkbox"/> 2 1

J6	Power supply (200-240 Vac / 50-60 Hz / 0.4 A) J6.1: L J6.2: N J6.3: Earth
J5	Recirculation pump ON switch J5.1: L1 J5.2: N J5.3: No connection J5.4: No connection J5.5: Earth
J4	SC/Care pump ON switch
J2	Motor output J2.1: Earth J2.2: Motor output – W phase J2.3: Motor output – U phase J2.4: Motor output – V phase



Combi Master		SCC	
J4	X18 SC – Pump M4	J4	X75 - Care Pump (only Index E) M12 X18 (1-2) - SC - Pump M4
		J5	X18 (4-3) - Cleanjet Pump M6

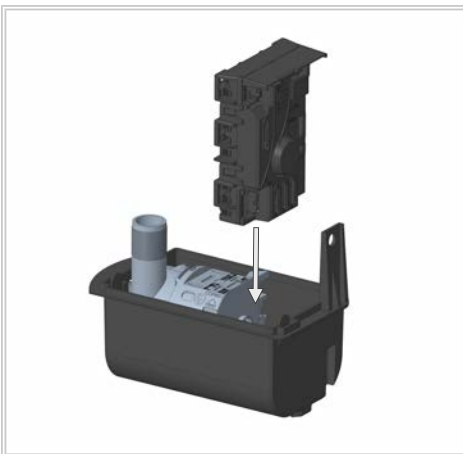


CMP		SCC	
J4	X18 (1-2) - SC Pump M4	J4	X18 (1-2) - SC Pump M4 / X75 (2-5) Care Pump M12
J5	X7 (2-3) - Cleanjet Pump M6 Index I	J5	X18 (4-3) - Cleanjet Pump M6

5. Place the pump PCB in the pump housing.

NOTICE

Note the installation direction of the pump PCB (see image).

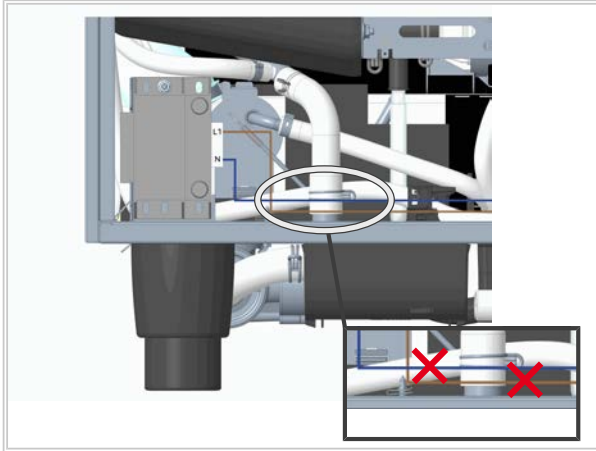


- Establish a power supply using the connection terminal.

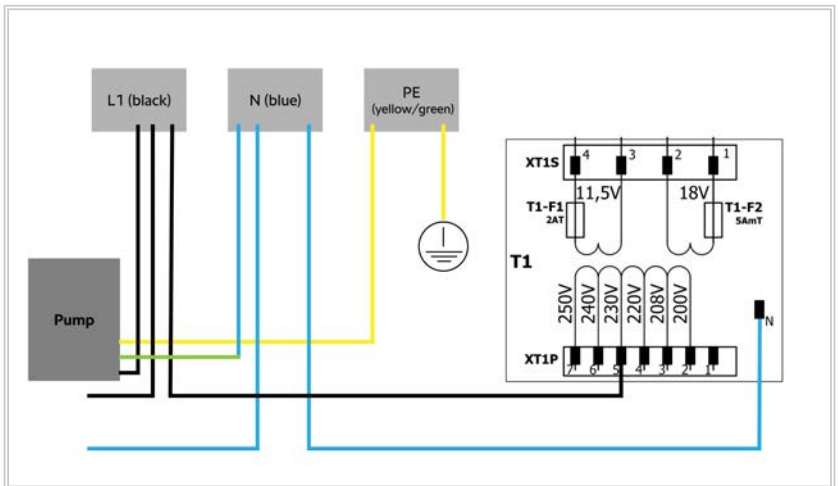
NOTICE

If connection terminals have already been attached to the transformer, skip step 7. Continue with step 8.

- Cut the supply line to transformer L1 (black) and N (blue) respectively. Insulate the resulting cable ends 11 mm [1/2 inch].



- Clamp the ends in the connection terminals. The PE (yellow-green) does not need to be cut, as it is earthed with the enclosed cable.



>> The modification is complete.

- Check the function of the pump in a function test.

MI_2214 Pump cleaning UP30 – modification of floor units



SCC with cleaning

60 min



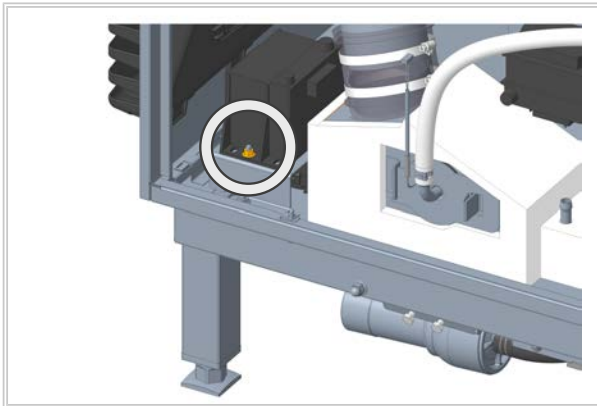
Standard



18/06/2025

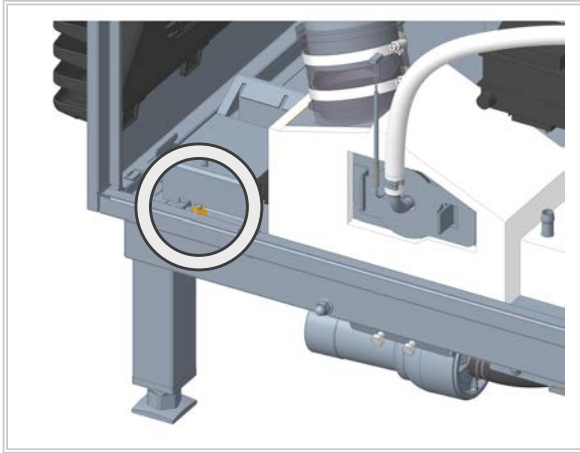
Work steps – Modification of the pump cleaning UP30 – Floor unit

- ✓ The unit is switched off and voltage-free.
 - ✓ The electrical compartment is open.
1. Loosen the nut on the transformer and disconnect it so that it can be removed.
Notice: On the SelfCookingCenter Index H/I Gas, there is no transformer in this position.

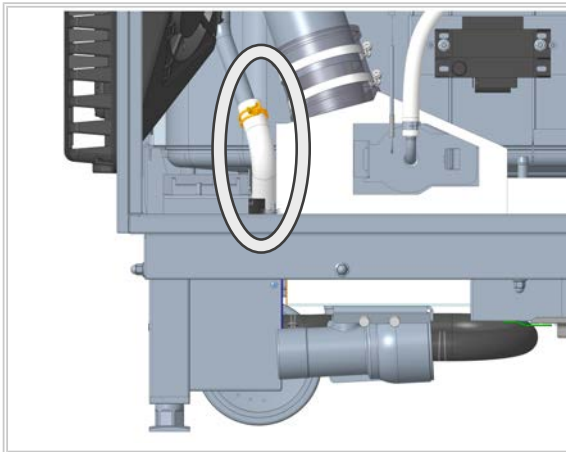


2. Loosen the nut on the transformer bracket

> Remove the transformer bracket.

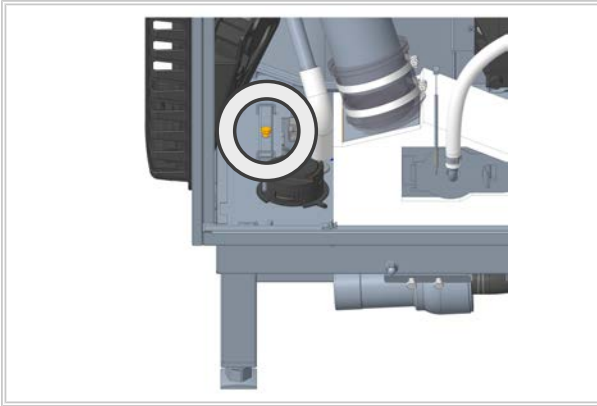


3. Pull off the pressure hose.



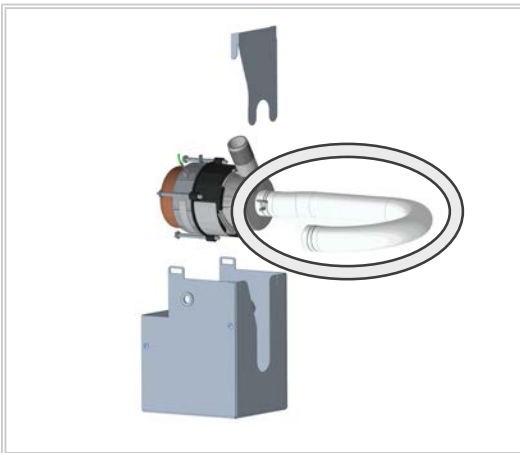
4. Loosen the screw on the locking plate,

- > Remove the pump housing with the pump facing downwards.



5. Disconnect the suction and pressure hose from the pump UP30 and the drain valve.

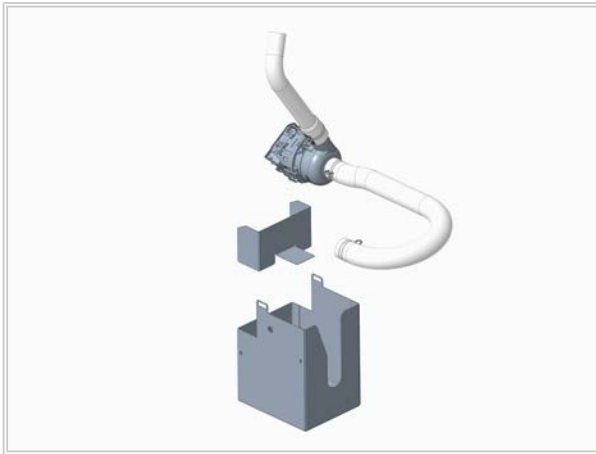
- > Remove the old pump UP30.



6. Connect the cable to the new pump.



7. Connect the suction and pressure hoses.
Reinsert the pump and the circulation pump spacer into the housing.



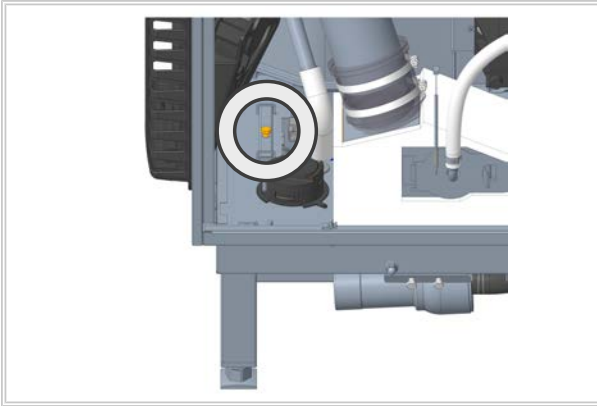
NOTICE

Do not remove the double base in the pump housing.

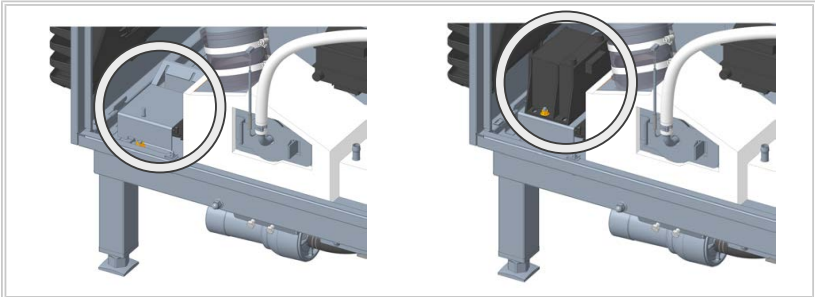
On some units, a double base is used in the pump housing to raise the pump to a higher position.

- The double base must not be removed.

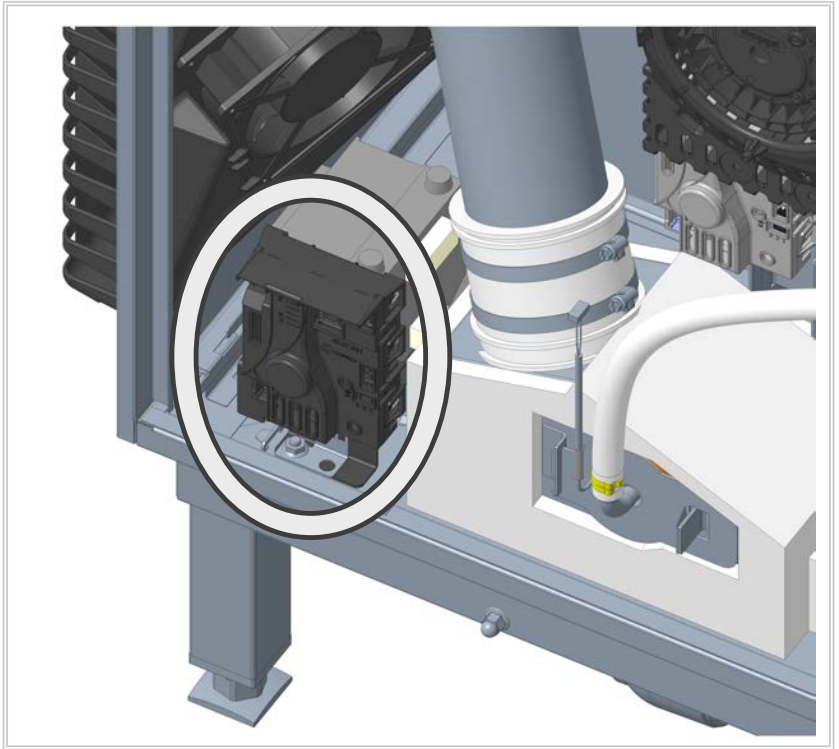
8. Reinsert the pump housing into the unit.
Secure the pump housing with the locking plate.
Important: The connected cable must be routed upwards in the direction of the transformer.



9. Reconnect the suction hose to the drain valve.
10. Put the transformer bracket and the transformer back in place.
Screw the transformer to the transformer bracket
Reconnect the transformer.



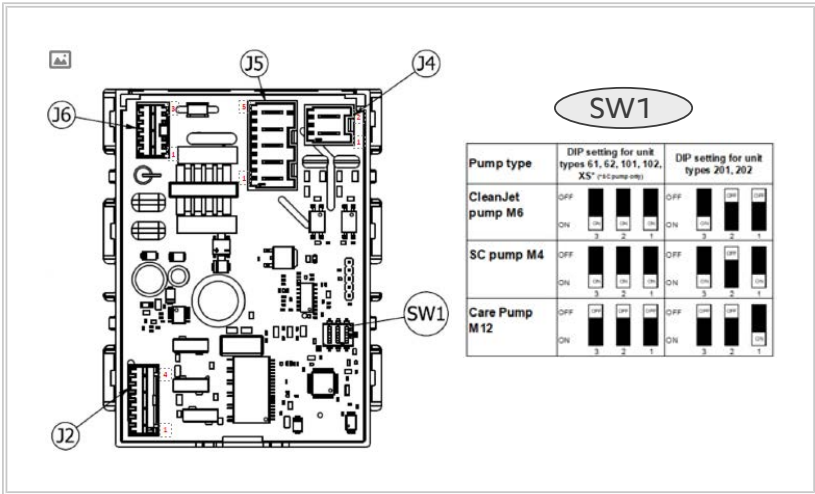
11. Insert the electronics bracket.
Screw the electronics bracket on tightly.
Plug the electronics into the electronics bracket.
Important: The lugs on the bracket must be bent by 90 degrees.



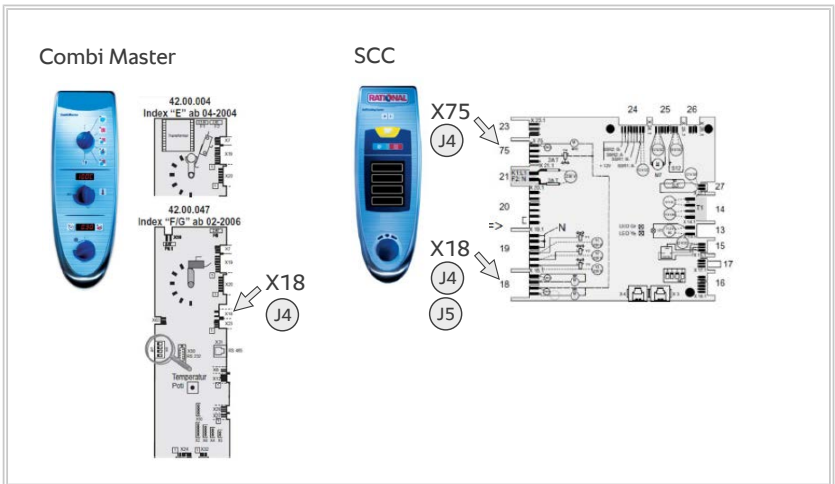
12. Connect all three cables to the control board.
 - (1) Power supply control board
 - (2) Connection plug from the cable trunk (if there is no plug, please note L1, N and PE)
 - (3) Pump and control board connection
 - (4) Note the switching positions as shown in the table.

NOTICE

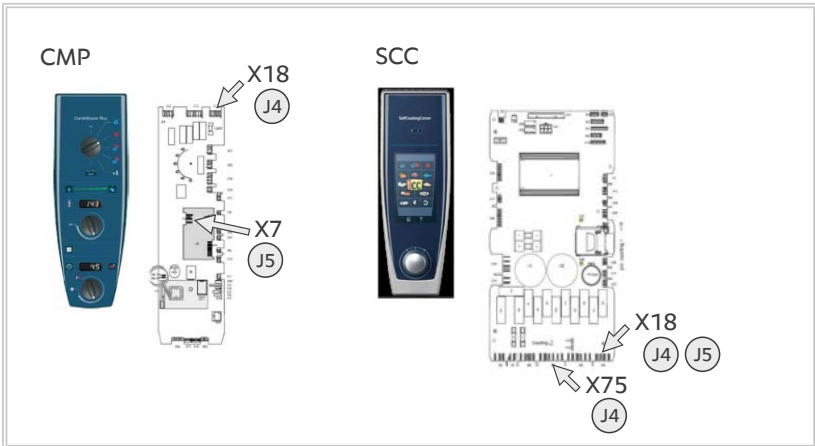
All cables are poka yoke.



J6	Power supply (200-240 Vac / 50-60 Hz / 0.4 A) J6.1: L J6.2: N J6.3: Earth
J5	Recirculation pump ON switch J5.1: L1 J5.2: N J5.3: No connection J5.4: No connection J5.5: Earth
J4	SC/Care pump ON switch
J2	Motor output J2.1: Earth J2.2: Motor output – W phase J2.3: Motor output – U phase J2.4: Motor output – V phase



Combi Master		SCC	
J4	X18 SC – Pump M4	J4	X75 - Care Pump (only Index E) M12 X18 (1-2) - SC - Pump M4
		J5	X18 (4-3) - Cleanjet Pump M6



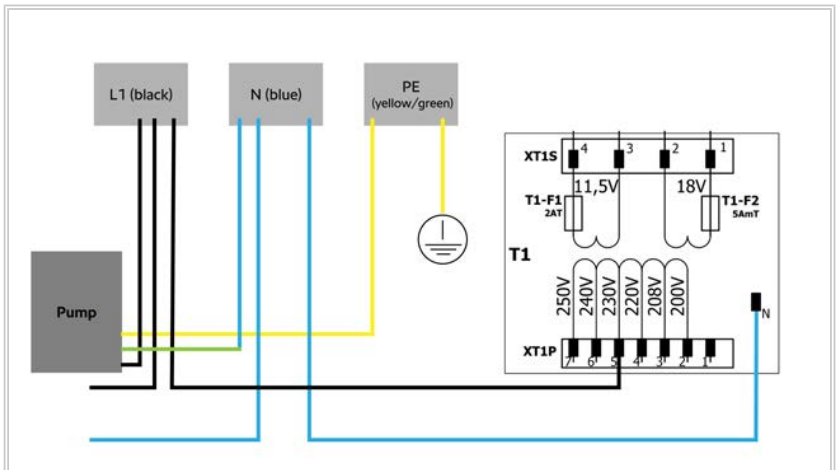
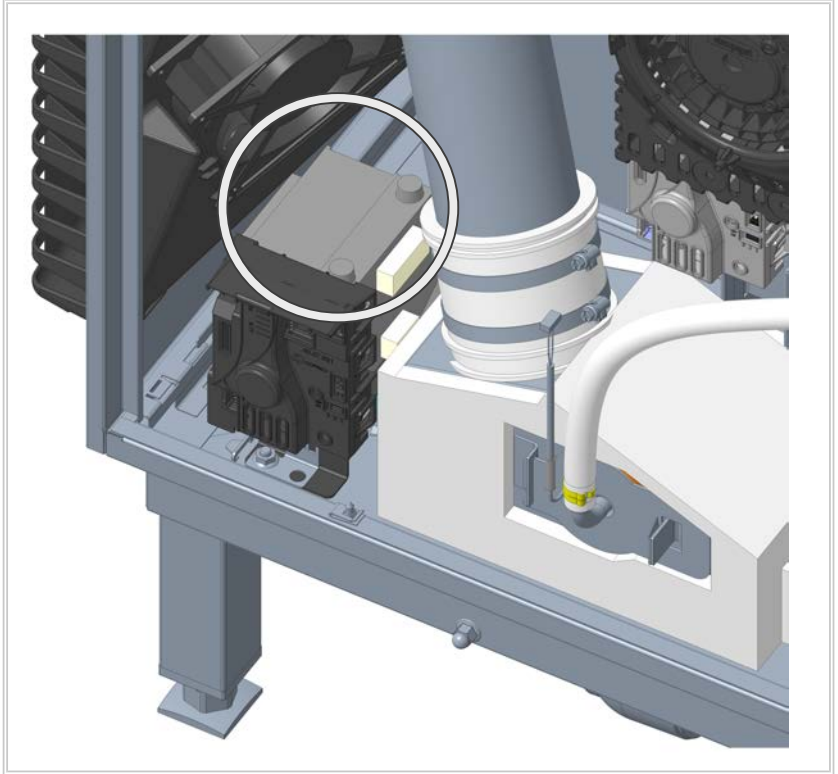
CMP		SCC	
J4	X18 (1-2) - SC Pump M4	J4	X18 (1-2) - SC Pump M4 / X75 (2-5) Care Pump M12
J5	X7 (2-3) - Cleanjet Pump M6 Index I	J5	X18 (4-3) - Cleanjet Pump M6

NOTICE

If connection terminals have already been attached to the transformer, skip step 13. Continue with step 14.

- Establish a power supply using the connection terminal.
Cut through the L1 (black) and N (blue) conductors.
Insulate the resulting cable ends 11 mm [1/2 inch].

14. Clamp the ends in the connection terminals. The PE does not need to be cut, it is earthed with the enclosed cable.



>> The retrofitting is complete.

15. Check the function of the pump in a function test.

