

Datasheets

DLE4.8CN Energy-optimized LBP/MBP R290 220-240V 50Hz

General

Code number	102H4565
Approvals	EN 60335-2-34 w. Annex AA
Compressors on pallet	100

Application

Application	LBP/MBP			
	Hz	50	60	
Frequency	Hz	50	60	
Evaporating temperature	°C	-35 to 7.2	-	
Voltage range	V	198 to 254	-	
Max. condensing temperature continuous (short)	°C	55 (65)	-	
Max. winding temperature continuous (short)	°C	125 (135)	-	

Cooling requirements

Frequency	Hz	50			60		
		LBP	MBP	HBP	LBP	MBP	HBP
32°C		F ₂	F ₂	-	-	-	-
38°C		F ₂	F ₂	-	-	-	-
43°C		F ₂	F ₂	-	-	-	-

Remarks on application:
For evaporation temperatures higher than 0 °C do not run compressor at condensing temperatures higher 50 °C in steady state operation.

Motor

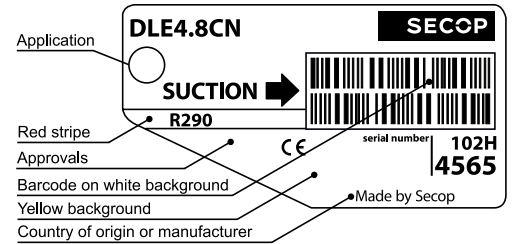
Motor type	CSIR/RSIR/RSCR		
LRA (rated after 4 sec. UL984), HST LST	A	6.6	5.7
Cut in Current, HST LST	A	6.6	9.9
Resistance, main start winding (25°C)	Ω	17.6	18.5

Design

Displacement	cm ³	4.80
Oil quantity (type)	cm ³	230 (polyolester)
Maximum refrigerant charge	g	150
Free gas volume in compressor	cm ³	1390
Weight without electrical equipment	kg	8.2

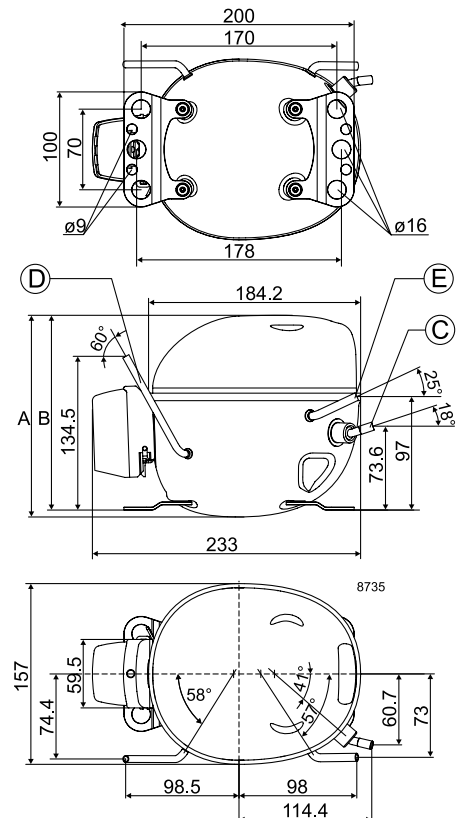
Dimensions

Height	mm	A	175
		B	169
		B1	-
		B2	-
Suction connector	location/I.D. mm angle	C	8.2 18°
	material comment		Copper Rubber plug
Process connector	location/I.D. mm angle	D	6.2 60°
	material comment		Copper Rubber plug
Discharge connector	location/I.D. mm angle	E	6.2 25°
	material comment		Copper Rubber plug
Oil cooler connector	location/I.D. mm angle	F	-
	material comment		-
Connector tolerance	I.D. mm		±0.09
Remarks:			



Yellow warning label

- S = Static cooling normally sufficient
- O = Oil cooling
- F₁ = Fan cooling 1.5 m/s (compressor compartment temperature equal to ambient temperature)
- F₂ = Fan cooling 3.0 m/s necessary
- SG = Suction gas cooling normally sufficient
- = not applicable in this area



EN 12900 LBP 220V, 50Hz, CSIR/RSIR, fan cooling F₂

Evap. temp. in °C	-45	-40	-35	-30	-25	-23.3	-20	-15	-10	-6.7	-5	0	5	7.2	10	15	20
Capacity in W			115	164	214	231	268	328	398	451	480	575	687	742			
Power cons. in W			121	132	145	149	157	169	180	187	190	198	203	205			
Current cons. in A			0.86	0.90	0.95	0.96	0.99	1.03	1.06	1.08	1.09	1.12	1.14	1.14			
COP in W/W			0.96	1.24	1.48	1.56	1.71	1.94	2.21	2.41	2.53	2.91	3.38	3.63			

EN 12900 MBP 220V, 50Hz, CSIR/RSIR, fan cooling F₂

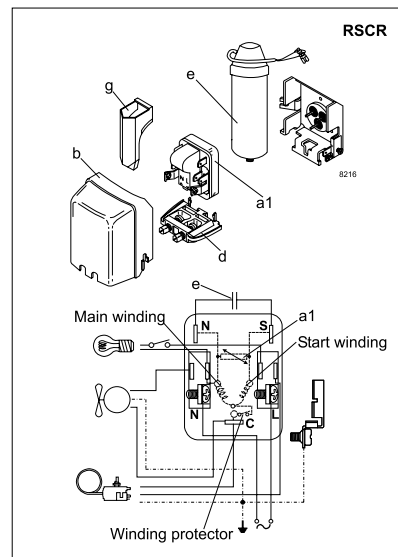
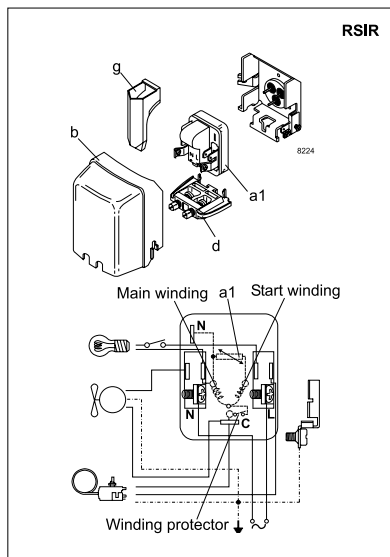
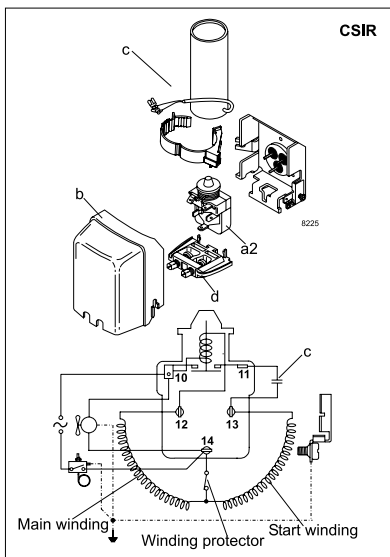
Evap. temp. in °C	-45	-40	-35	-30	-25	-23.3	-20	-15	-10	-6.7	-5	0	5	7.2	10	15	20
Capacity in W			105	150	196	213	247	304	369	419	446	536	643	695			
Power cons. in W			123	136	150	154	164	178	191	199	203	213	221	224			
Current cons. in A			0.87	0.91	0.96	0.97	1.00	1.05	1.09	1.12	1.13	1.17	1.20	1.21			
COP in W/W			0.85	1.10	1.31	1.38	1.51	1.71	1.94	2.10	2.20	2.51	2.90	3.10			

ASHRAE LBP 220V, 50Hz, CSIR/RSIR, fan cooling F₂

Evap. temp. in °C	-45	-40	-35	-30	-25	-23.3	-20	-15	-10	-6.7	-5	0	5	7.2	10	15	20
Capacity in W			128	176	225	242	278	339	410	464	494	595	715	775			
Power cons. in W			119	134	150	155	166	183	200	210	215	229	242	246			
Current cons. in A			0.89	0.94	0.99	1.01	1.05	1.10	1.16	1.20	1.22	1.28	1.34	1.36			
COP in W/W			1.08	1.31	1.50	1.56	1.67	1.85	2.05	2.21	2.30	2.59	2.96	3.14			

ASHRAE MBP/HBP 220V, 50Hz, CSIR/RSIR, fan cooling F₂

Evap. temp. in °C	-45	-40	-35	-30	-25	-23.3	-20	-15	-10	-6.7	-5	0	5	7.2	10	15	20
Capacity in W			114	157	201	217	249	303	366	413	440	529	636	689			
Power cons. in W			118	132	148	154	165	181	197	208	213	227	239	243			
Current cons. in A			0.89	0.94	0.99	1.01	1.05	1.10	1.16	1.20	1.22	1.28	1.34	1.36			
COP in W/W			0.97	1.19	1.36	1.41	1.51	1.67	1.85	1.99	2.07	2.34	2.66	2.83			



Accessories for	DLE4.8CN	Figure	Code number
PTC starting device	6.3 mm spade connectors	a1	-
	4.8 mm spade connectors		-
ePTC starting device	4.8 mm spade connectors	a2	103N0050
Starting relay	6.3 mm spade connectors	a2	117U7001
Start. capacitor 60 µF	6.3 mm spade connectors	c	117U5014
Cover		b	103N0491
Run capacitor 5 µF (optional)	6.3 mm spade connectors	e	-
	4.8 mm spade connectors		117-7129
Cord relief		d	103N1010
Protection screen for PTC		g	-

Test conditions	EN 12900		ASHRAE	
	LBP	MBP	LBP	MBP
Condensing temperature	40°C	45°C	54.4°C	54.4°C
Ambient temperature	32°C	32°C	32.2°C	35°C
Suction gas temperature	20°C	20°C	32.2°C	35°C
Liquid temperature	no subcooling		32.2°C	46.1°C

Mounting accessories	Code number	
Bolt joint for one comp.	Ø: 16 mm	118-1917
Bolt joint in quantities	Ø: 16 mm	118-1918
Snap-on in quantities	Ø: 16 mm	118-1919

Danfoss can accept no responsibility for possible errors in catalogues, brochures and other printed material. Danfoss reserves the right to alter its products without notice. This also applies to products already on order provided that such alterations can be made without consequential changes being necessary in specifications already agreed. All trademarks in this material are property of the respective companies. Danfoss and the Danfoss logotype are trademarks of Danfoss A/S. All rights reserved.