

Service Bulletin

This bulletin replaces SB24-10 service bulletin.

Subject: FilterQuick Touch Screen Controller Part Numbers

Models: McDonald's BIELA14 & BIGLA30 Touch Screen Fryers and FilterQuick FQE30/60/80 & FQG30/60/80/100/120 Touch Screen Fryers.

9.23.24

The older style Frymaster touch screen controllers with the **LARGE WIDE BLACK PLASTIC SURROUND** (see Figure 1 below) are obsolete. They are being replaced with new Common Controller kits that have a cooling housing & fan on the rear and a louver on the front (see Figures 2 & 3). The older part numbers will roll to the new part numbers in the yellow column below. The controllers below have all software, settings and menus already preprogrammed into them. **New controllers DO NOT require swapping SD cards and should NEVER be done. Swapping out SD cards with older controllers will damage and may render the new controller inoperable.**

Older touch screen controllers with the **LARGE WIDE BLACK PLASTIC SURROUND** should **NOT** be replaced with the controller part numbers in the blue column below (see Figure 4). If controller part numbers in the blue column are used as replacements for the older style controllers, the controllers may overheat, reset and blank out.

When ordering Frymaster Touch Screen Controllers use the tables, dates and photos below to determine the correct part numbers.

The older style FQ4000 touch screen has a **LARGE WIDE BLACK PLASTIC SURROUND** (see Figure 1). The newer style FQ4000 touch screen has a **METAL BEZEL SURROUND** (see Figure 4).

Controller settings such as energy type, vat type, oil type, waste oil type, etc. may require changing.

The new touch screen vat ID locator is selected in the software instead of the traditional hardwired 6-pin locator. The selection is made at HOME>SERVICE>SERVICE>3000 or 1650>TECH MODES>SELECT VAT ID.



Figure 1 Older Style FQ4000 Touch Screen Controller (Large Wide Black Plastic Surround)



Figure 2 Front of Replacement Controller for Older Style Controllers with Cooling Louver

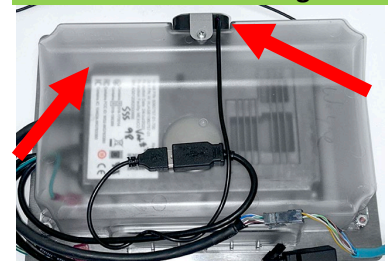


Figure 3 Rear of Replacement Controller for Older Style Controllers with housing and fan.



Figure 4 Newer FQ4000 Touch Screen Controller (Metal Bezel Surround)

Description	Older Style Large Black Plastic Surround Controller Replacement KITS	Newer Style Metal Bezel Surround Controller
30LB Fryers	Serial #'s 2203 & Before	Serial #'s 2204 to Current
A&W FQ4000 (FQE30-T/FQG30-T)	8263721	1089310SP

Description	Older Style Large Black Plastic Surround Controller Replacement KITS	Newer Style Metal Bezel Surround Controller
30LB Fryers	Serial #'s 2203 & Before	Serial #'s 2204 to Current
Applebee's FQ4000 (FQE30-T/FQG30-T)	8263819	1089308SP
Arby's FQ4000 (FQE30-T/FQG30-T)	8263722	1089256SP
Burger King FQ4000 (FQE30-T/FQG30-T)	8263723	1089253SP
Casey's (FQE30-T)	N/A	1089560SP
Checker's FQ4000 (FQE30-T/FQG30-T)	N/A	1089394SP
Dairy Queen FQ4000 (FQE30-T/FQG30-T)	8263726	1089396SP
General Market FQ4000 (FQE30-T/FQG30-T)	8263727	1089312SP
IHOP FQ4000 (FQE30-T/FQG30-T)	N/A	1089350SP
Mary Brown's FQ4000 (FQE30-T/FQG30-T)	N/A	1089504SP
McDonald's M4000 BIELA14-T, BIGLA30-T (<i>NON-CE</i>) Domestic USA North, South, Latin America	8263699	1089233SP
McDonald's M4000 BIGLA30-T (<i>International CE</i>) Gas	8263700	1089237SP
McDonald's M4000 BIELA14-T (<i>International CE</i>) Electric	8263818	1089239SP
McDonald's M4000 BIGLA30-T <i>Israel</i>	8263701	1089245SP
McDonald's M4000 BIGLA30-T <i>Korea</i>	8263702	1089249SP
McDonald's M4000 <i>Japan</i>	8263703	1089229SP
Peter Pane FQ4000 (FQE30-T/FQG30-T)	N/A	1089554SP
Sheetz FQ4000 (FQE30-T/FQG30-T)	8263735	1089395SP
Sonic FQ4000 (FQE30-T/FQG30-T)	8263736	1089320SP
Steak & Shake FQ4000 (FQE30-T/FQG30-T)	N/A	1089318SP
Taco Bell FQ4000 (FQE30-T/FQG30-T)	8263741	1089262SP
Whataburger FQ4000 (FQE30-T/FQG30-T)	N/A	1089513SP
60LB, 80LB, 100LB, 120LB Fryers	Serial #'s 2208 & Before	Serial #'s 2209 to Current
Buffalo Wild Wings FQ4000 (FQE60-T/FQG60-T)	8263724	1089417SP
Chick-Fil-A FQ4000 (FQG60-T)	8263725	1089411SP
Dave & Buster's FQ4000 (FQE60U-T/FQG60-T)	N/A	1089551SP
General Market FQ4000 (FQE60U-T) Electric	8263728	1089399SP
General Market FQ4000 (FQG60-T) Gas	8263729	1089407SP
Original Joes FQ4000 (FQG60-T) Gas	8263730	1089416SP
Popeye's FQ4000 (FQG120T)	8263731	1089420SP
Popeye's FQ4000 (FQG120T) Canada	8263732	1089421SP



Prior Older Style FQ4000 Touch Screen Controller (Large Black Plastic Surround)



Newer FQ4000 Touch Screen Controller (Metal Bezel Surround)

Description	Older Style Large Black Plastic Surround Controller Replacement KITS	Newer Style Metal Bezel Surround Controller
60LB, 80LB, 100LB, 120LB Fryers	Serial #'s 2208 & Before	Serial #'s 2209 to Current
Popeye's FQ4000 (FQE80U, FQE100U) (ELEC CE) Europe	N/A	1089419SP
Racetrac FQ4000 (FQE60U-T, 1814E) (Left & Middle Controllers)	8263734	1089405SP
Racetrac FQ4000 (FQE60U-T, 1814E) (Far Right)	8263820	1089406SP
Raising Canes FQ4000 (FQE80U, FQG80T)	N/A	1089543SP
7-11 FQ4000 (FQE80U)	8263742	1089418SP
Slim Chickens FQ4000 (FQG80T)	N/A	1089545SP
Speedway (FQE60U-T)	8263737	1089401SP
St. Hubert FQ4000 (FQG60-T)	8263821	1089414SP
Swiss Chalet FQ4000 (FQG60-T)	8263739	1089412SP
Swiss Harvey FQ4000 (FQG60-T)	8263740	1089456SP

Support materials posted to the web:

Manuals:

- 8197342 BIELA14-T LOV Electric Parts Manual
<http://fm-xweb.frymaster.com/service/udocs/Manuals/8197342.pdf>
- 8197544 BIGLA30-T LOV Gas Parts Manual
<http://fm-xweb.frymaster.com/service/udocs/Manuals/8197544.pdf>
- 8197466 FQG30E-T FilterQuick Touch FQE30U-T Electric Parts Manual
<http://fm-xweb.frymaster.com/service/udocs/Manuals/8197466.pdf>
- 8197478 FilterQuick Touch FQG30U-T Gas Parts Manual
<http://fm-xweb.frymaster.com/service/udocs/Manuals/8197478.pdf>
- 8197627 FilterQuick Touch FQE60U/1814E Electric Parts Manual
<http://fm-xweb.frymaster.com/service/udocs/Manuals/8197627.pdf>
- 8197918 FilterQuick Touch FQG60T/1814G Gas Parts Manual
<http://fm-xweb.frymaster.com/service/udocs/Manuals/8197918.pdf>
- 8197935 FilterQuick Touch FQE80U Electric Parts Manual
<http://fm-xweb.frymaster.com/service/udocs/Manuals/8197935.pdf>
- 8197943 FilterQuick Touch FQG80T/100T/120T easyTouch Gas Parts Manual
<http://fm-xweb.frymaster.com/service/udocs/Manuals/8197943.pdf>
- 8196321 Major Components Parts Manual
<http://fm-xweb.frymaster.com/service/udocs/Manuals/8196321.pdf>